

**KSE**

---

Kyiv  
School of  
Economics

Olesia  
Verchenko

# Vision 2022

# Fulfilling Our Mission

---

What do we exist for?

In a world of colliding economic, political, technological and nature-led forces, Ukraine in its current shape and form is not a sustainable player. For the country to survive and thrive, to be a value for the world and to itself, Ukraine must nurture a very strong intellectual capacity.

We exist to build the intellectual foundation for a strong and innovative economy of Ukraine.

---

Our values are: What we believe in?

World class excellence

Merit-based approach

Intellectual honesty

Supremacy of research

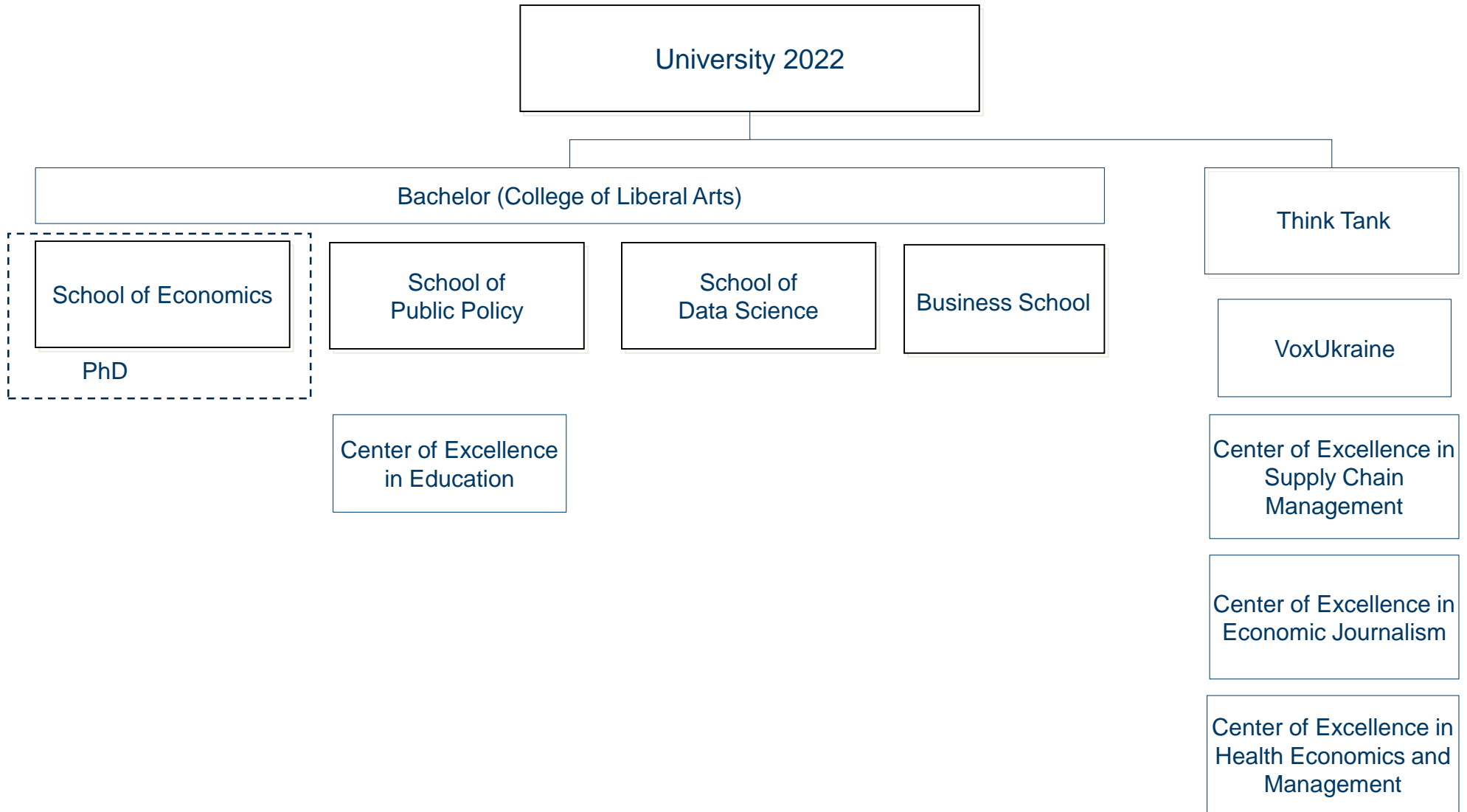
What is our role?

**We are the tipping point  
in invigorating growth  
of the Ukrainian economy  
for maximum impact  
in the world economy**

How do we fulfill our role?

We build a University that produces high-quality original research and raises a critical mass of competent people for economic and public policy reforms, transformation of business culture, and economic growth.

October 2017

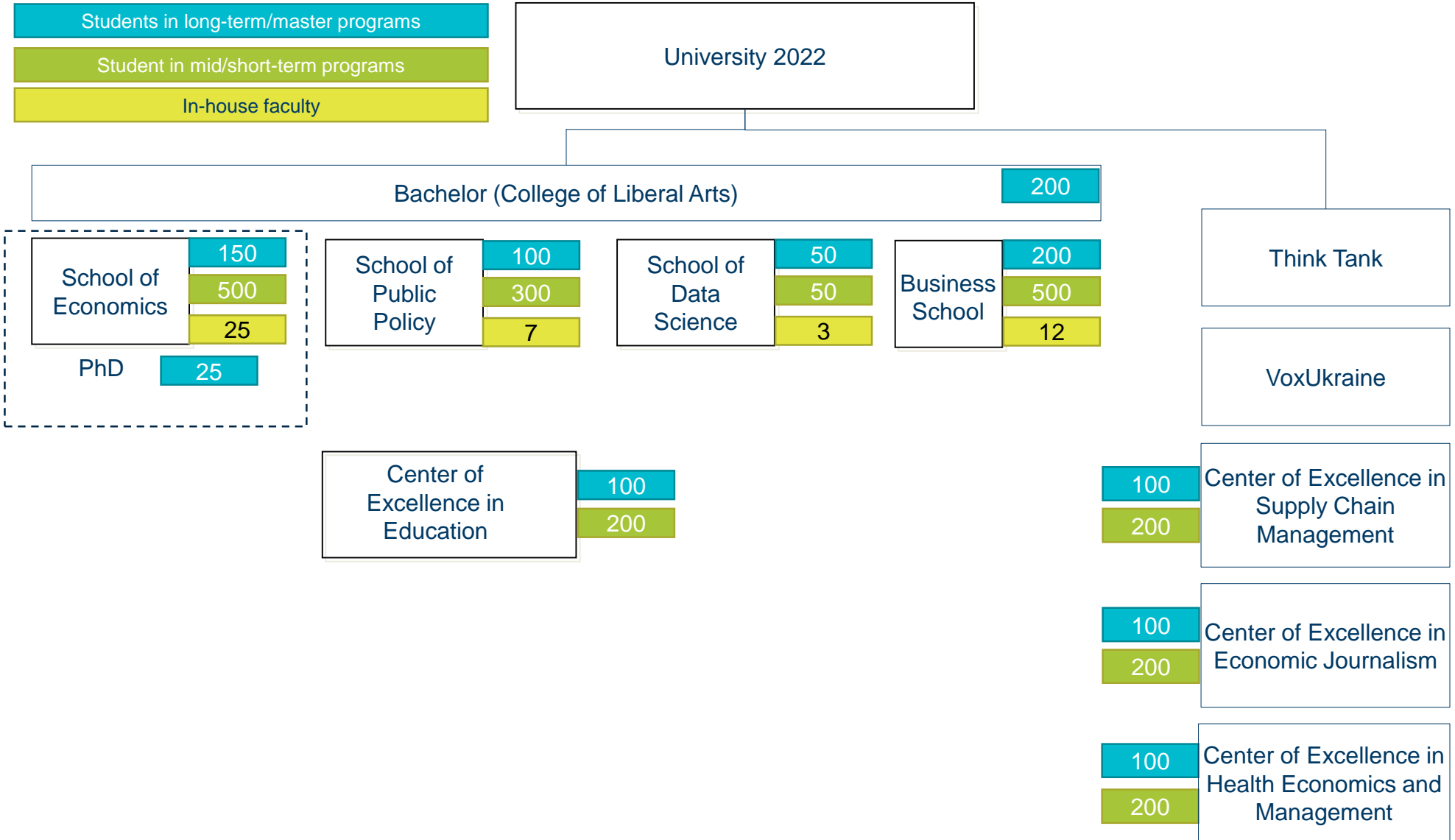


October 2018

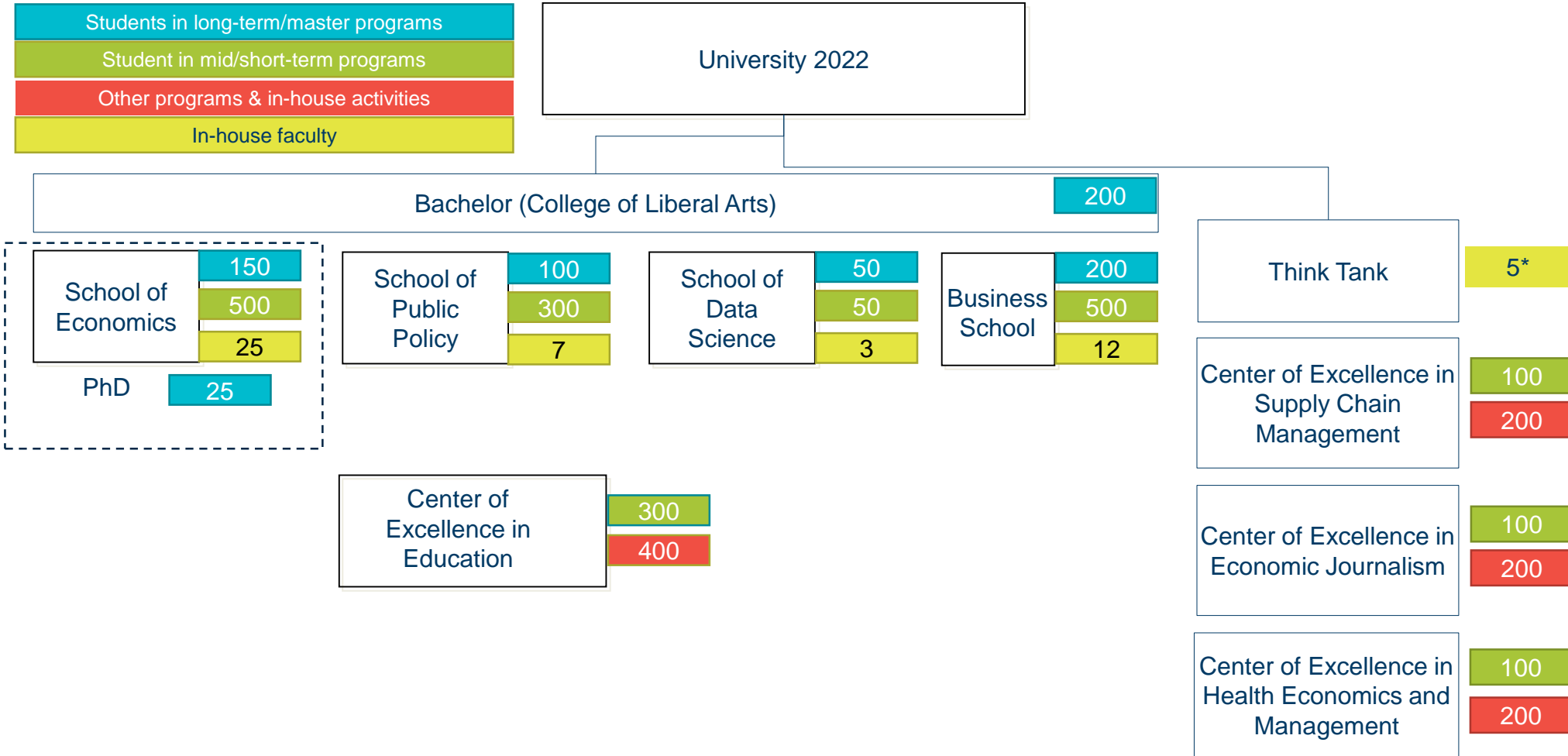




# October 2017



# October 2018



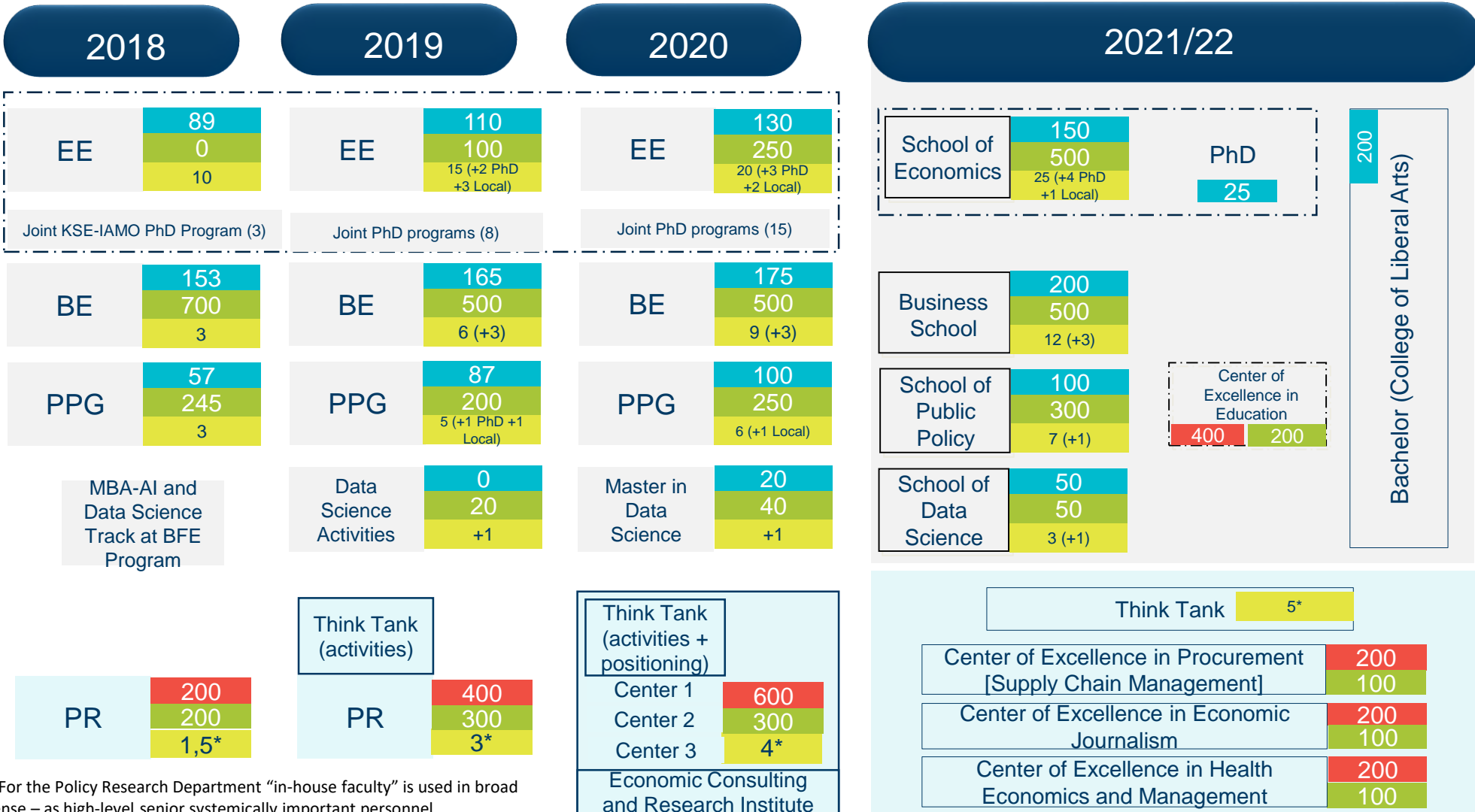
# How to Get There?

Students in long-term/master programs

Student in mid/short-term programs

Other programs & in-house activities

In-house faculty



\* For the Policy Research Department “in-house faculty” is used in broad sense – as high-level senior systemically important personnel

Students in long-term/master programs

Student in mid/short-term programs

Other programs & in-house activities

In-house faculty

2018

2019

2020

2021/22

EE	89	EE	110	EE	130
	0		100		250
	10		15 (+2 PhD +3 Local)		20 (+3 PhD +2 Local)
Joint KSE-IAMO PhD Program (3)		Joint PhD programs (8)		Joint PhD programs (15)	

BE	153	BE	165	BE	175
	700		500		500
	3		6 (+3)		9 (+3)
PPG	57	PPG	87	PPG	100
	245		200		250
	3		5 (+1 PhD +1 Local)		6 (+1 Local)

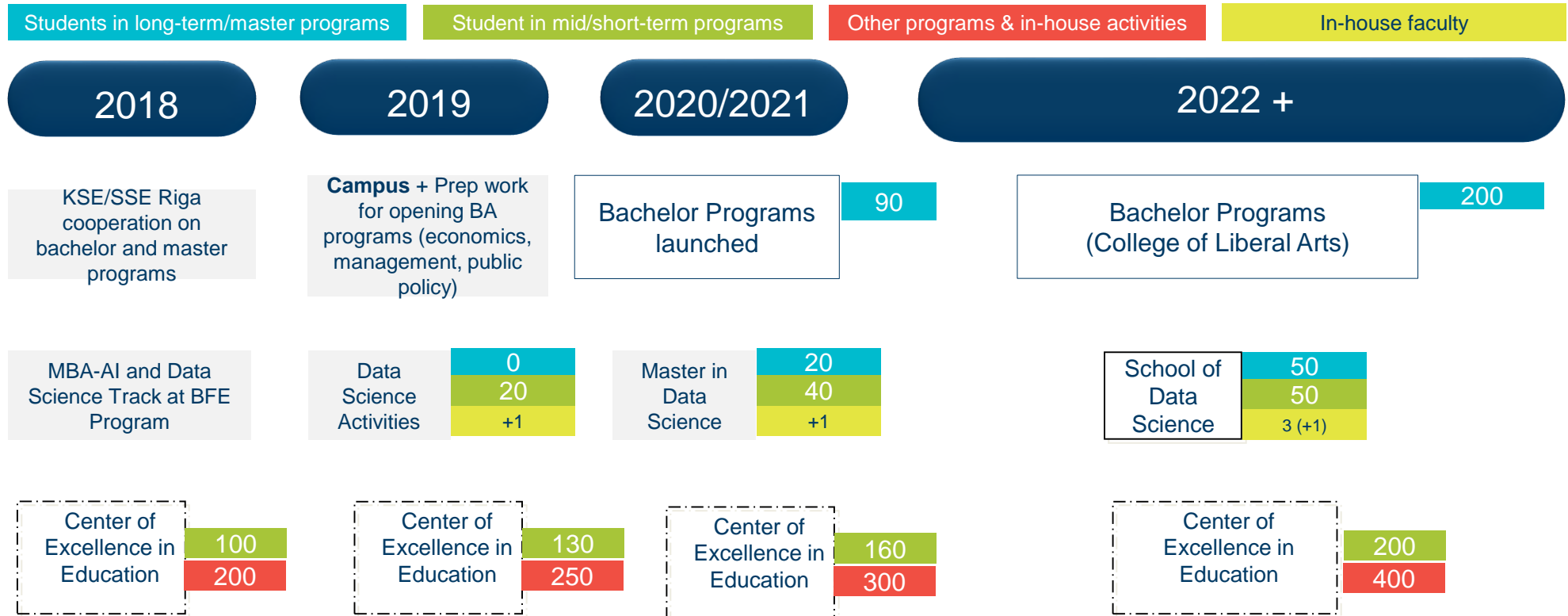
School of Economics	150	PhD
	500	25
	25 (+4 PhD +1 Local)	

Business School	200
	500
	12 (+3)

School of Public Policy	100
	300
	7 (+1)



\* For the Policy Research Department “in-house faculty” is used in broad sense – as high-level senior systemically important personnel



---

## Key directions for development

- Transform the existing master programs into Schools by increasing the number of full-time faculty and enrolled students
- Transform the Policy Research department into a think tank and several centers of excellence, in which the department has substantial expertise
- Establish a Center of Excellence in Education for deeper impact on the national (and regional) educational system and broader outreach
- Establish a PhD program in Economics in cooperation with local and international universities
- Establish a Data Science School by adding new data science activities and a master program to the KSE portfolio
- Launch bachelor programs in economics, management and public policy to increase scale and create more sustainable base for master programs



---

## Critical resources

Facilities: a building or a campus

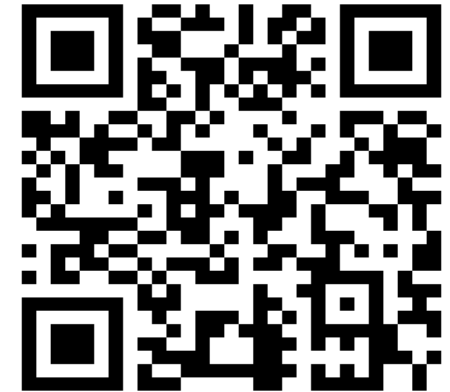
Leadership and governance: strong and committed management team

Faculty: 40-50 full-time faculty members

Fundraising: USD 1-1.2 mln per annum

## Support

We are thankful to our alumni, sponsors, strategic partners, and friends of KSE, who have supported KSE scholarship program!



To make a donation – please use a QR code:  
Be a part of something bigger with Kyiv School of Economics!

# Thank you!